

# *LaGrange School District 105*

## *First Quarter Goals Update 2014-15*

*10/27/14*



# Use of Fall Data FY15

- Data in teachers' hands September-October
- Grade level and school achievement targets
- Progress targets – set district wide based on 90<sup>th</sup> percentile rank nationally (MAP)
- Goal setting with students – greatest impact on student achievement and progress
- Pre and Post Assessments per unit of instruction
- School Improvement Planning
  - Focused Greatest Area of Need (GAN) – school and grade level/content area
  - Action Plans by Grade Level or Content Area
  - Stronger District-classroom connection regarding implementation

# Greatest Areas of Need (GAN)

## Two Greatest Areas of Need:

1. Progress of Highest Achieving Students
2. Achievement Gap

### *Progress of Highest Achieving Students*

- Making annual growth
- Fall-spring analysis
- Spring-spring analysis
- Advanced Academic Department
  - ELA and Math Specialists
- Report progress results in Winter and Spring benchmarking periods
- Progress Targets: 75% Math; 68% Reading
  - 90<sup>th</sup> Percentile nationally

# Greatest Areas of Need (GAN)

## Two Greatest Areas of Need:

### ***2. Achievement Gap***

- ❑ Overall achievement down from 3 year average
- ❑ Above benchmark district in math and reading achievement
- ❑ 1<sup>st</sup> and 2<sup>nd</sup> grade achievement down
- ❑ Sub-groups – achievement of Hispanic students and students of poverty
- ❑ District SMART Goal
- ❑ Deep understanding of Hispanic culture
- ❑ Deep understanding of poverty
- ❑ Parent Initiative pilot – Hodgkins School
- ❑ Study of Doug Reeve's 90-90-90 schools
- ❑ More to achievement gap than instructional resources

**LaGrange School District 105 Dashboard**  
**Fall 2014-2015 District Goals Update**

Goal Description	Subject Area	3 Year Fall Rolling Average	FY 2015 School Year Fall Actual	FY 2015 Benchmark District Fall Actual	2014-2015 School Year Spring Target	Status
<b>GOAL: Students will achieve high academic standards</b>						
Students achieve annual progress targets in reading and math.	Math Progress	N/A	64% (Year End 2013-14 progress results)	Available Spring 2014	75%* (It is estimated that meeting this target would place D105 in the top 10% of districts taking the MAP assessment)	<a href="#">Notes</a>
	Reading Progress	N/A	63% (Year End 2013-14 progress results)	Available Spring 2014	68%* (It is estimated that meeting this target would place D105 in top 10% of districts taking the MAP assessment)	<a href="#">Notes</a>
Students achieve district learning goals in all curricular areas  *Assessments in other curricular areas to be created	Math Achievement	58%*	55%*	47%*	69%* (It is estimated that meeting this target would place D105 in the top 15% of districts taking the MAP assessment)	<a href="#">Notes</a>
	Reading Achievement	60%*	57%*	54%*	71%* (It is estimated that meeting this target would place D105 in the top 15% of districts taking the MAP assessment)	<a href="#">Notes</a>

\*Percentage of students progressing and achieving at or above the national 50<sup>th</sup> percentile ranking on MAP (Measures of Academic Progress) Math and Reading

Red Not progressing toward target – top area of concern  
Yellow School progressing but all targets are not met  
Green Progressing effectively

DASHBOARD LAST UPDATED: October 2014  
 DASHBOARD NEXT UPDATED: March 2015



*LaGrange School District 105 Dashboard  
Fall 2014-2015 District Goals Update*

Goal Description	Subject Area	3 Year Fall Rolling Average	FY 2015 School Year Fall Actual	FY 2015 Benchmark District Fall Actual	2014-2015 School Year Spring Target	Status
<b>GOAL : Students will achieve high academic standards</b>						
Students meet or exceed state <del>ISAT</del> standards in reading and math	<del>ISAT</del> Math	65% (average based on new <del>ISAT</del> performance cut scores)  <del>Approx.</del> 88% with previous cut scores)	69% (Spring 2014 results)	60% (State of Illinois Results)	No <del>ISAT</del> in 2015  Replaced by <del>PARCC</del> (Common Core Standards assessment)	<a href="#">Notes</a>
	<del>ISAT</del> Reading	66% (average based new <del>ISAT</del> performance cut scores)  <del>Approx.</del> 88% with previous cut scores)	66% (Spring 2014 results)	57% (State of Illinois Results)	No <del>ISAT</del> in 2015  Replaced by <del>PARCC</del> (Common Core Standards assessment)	<a href="#">Notes</a>

\*Percentage of students progressing and achieving at or above the national 50<sup>th</sup> percentile ranking on MAP (Measures of Academic Progress) Math and Reading

Red Not progressing toward target – top area of concern  
Yellow School progressing but all targets are not met  
Green Progressing effectively

DASHBOARD LAST UPDATED: October 2014  
 DASHBOARD NEXT UPDATED: March 2015



*LaGrange School District 105 Dashboard*  
*Fall 2014-2015 District Goals Update*

Goal Description	Subject Area	3 Year Fall Rolling Average	FY 2015 School Year Fall Actual	FY 2015 Benchmark District Fall Actual	2014-2015 School Year Spring Target	Status
Students make a successful transition to high school	<b>Math</b>	N/A	Prep = 61% <u>Accl/Honors</u> = 39%	N/A	TBD	
	<b>English</b>	N/A	Prep = 58% <u>Accl/Honors</u> = 42%	N/A	TBD	
	<b>Science</b>	N/A	Prep = 77% <u>Accl/Honors</u> = 23%	N/A	TBD	

\*Percentage of students progressing and achieving at or above the national 50<sup>th</sup> percentile ranking on MAP (Measures of Academic Progress) Math and Reading

Red Not progressing toward target – top area of concern  
Yellow School progressing but all targets are not met  
Green Progressing effectively

DASHBOARD LAST UPDATED: October 2014  
 DASHBOARD NEXT UPDATED: March 2015



*LaGrange School District 105 Dashboard  
Fall 2014-2015 District Goals Update*



Goal Description	2013-2014 School Year Spring Actual	2014-2015 School Year Spring Targets	2014-2015 School Year Spring Survey Results	Status
<b>GOAL: Students attend school in a safe and supportive learning environment</b>				
<b>Students Report:</b>				
I feel safe at this school	94%	94%	Available summer 2015	
This school is a good place to learn	96%	96%	Available summer 2015	
My things are safe at this school	92%	92%	Available summer 2015	
Students treat me with respect	86%	90%	Available summer 2015	
Good behavior and good choices are recognized at this school	93%	93%	Available summer 2015	
I like going to this school	91%	91%	Available summer 2015	
<b>Parents Report:</b>				
My child feels safe at this school	97%	97%	Available summer 2015	
My child's teacher promotes respectful relationships among all students in this school	87%	90%	Available summer 2015	
My child enjoys going to this school	95%	95%	Available summer 2015	

\*Percentage of students progressing and achieving at or above the national 50<sup>th</sup> percentile ranking on MAP (Measures of Academic Progress) Math and Reading



Not progressing toward target – top area of concern  
School progressing but all targets are not met  
Progressing effectively

DASHBOARD LAST UPDATED: October 2014  
DASHBOARD NEXT UPDATED: March 2015

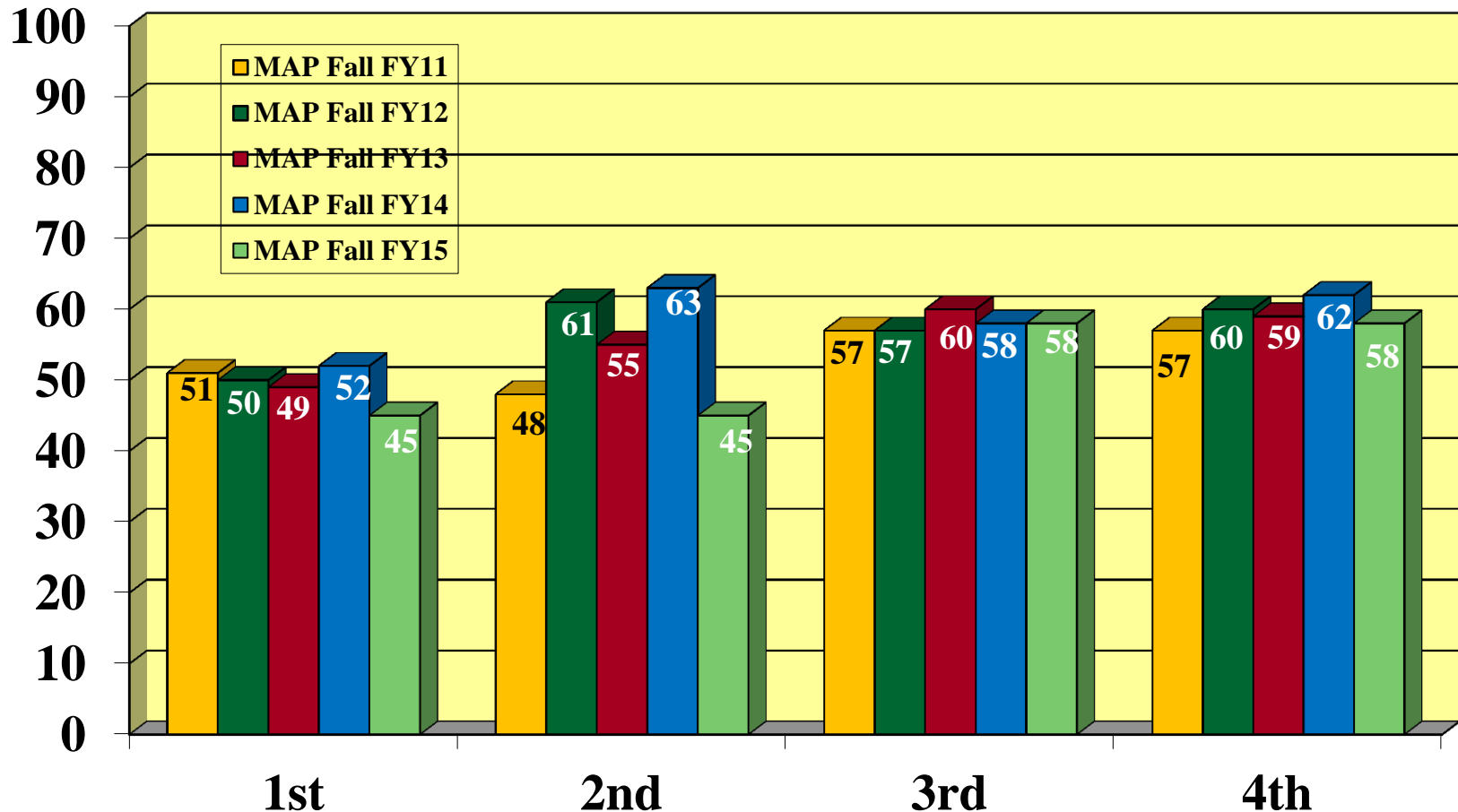


**School District 105**  
Countryside – Hodgkins - LaGrange



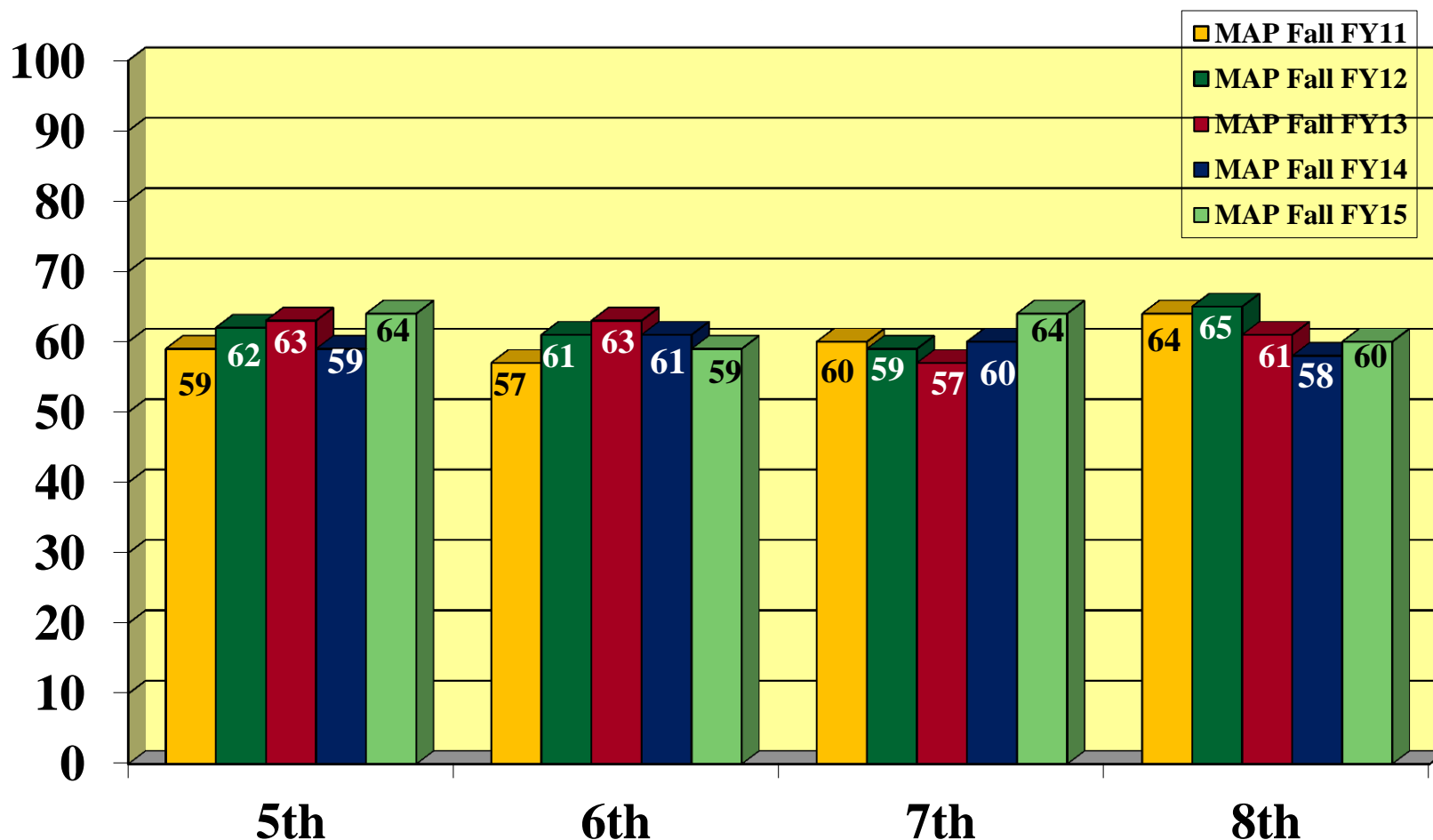
**Goal:** All students will demonstrate continuous growth and achieve college and career readiness standards – Reading Achievement

*1<sup>st</sup>-4<sup>th</sup> Grade Students AT or ABOVE national averages on  
MAP Reading Assessment*



**Goal:** All students will demonstrate continuous growth and achieve college and career readiness standards – Reading Achievement

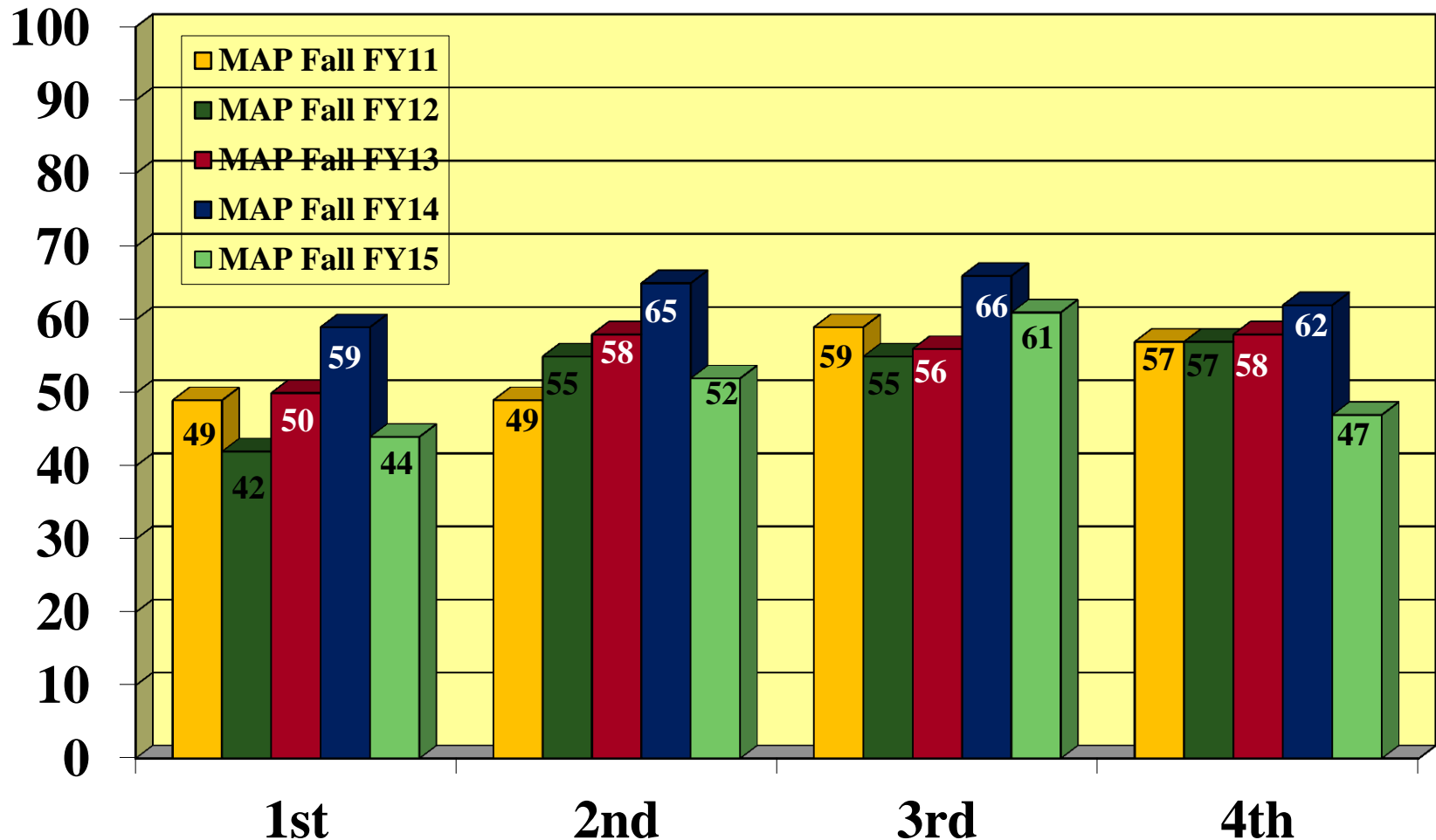
*5<sup>th</sup>-8<sup>th</sup> Grade Students AT or ABOVE national averages on  
MAP Reading Assessment*



**Goal:** All students will demonstrate continuous growth and achieve college and career readiness standards – Math Achievement

*1<sup>st</sup>-4<sup>th</sup> Grade Students*

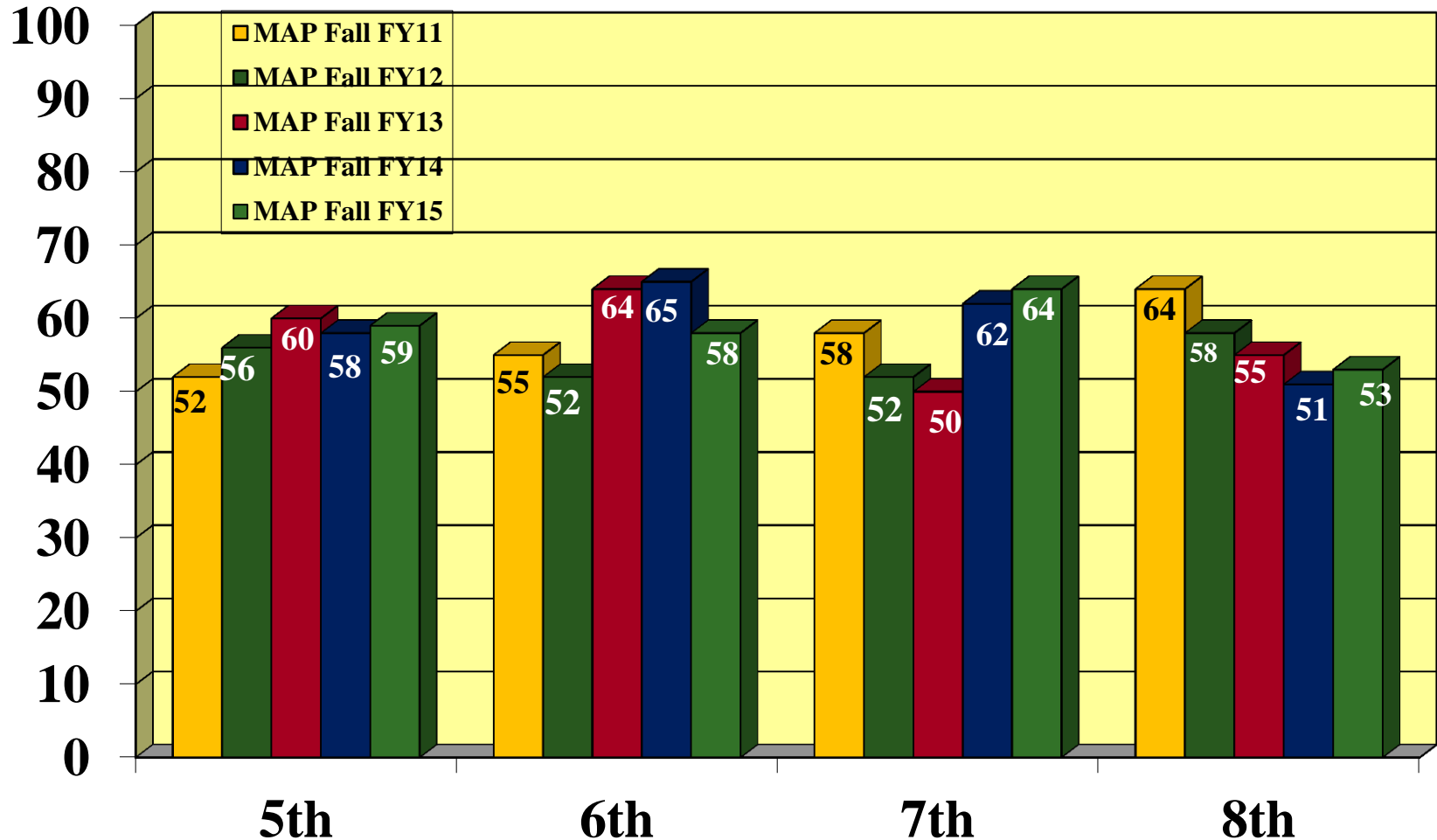
*AT or ABOVE national averages on MAP Math Assessment*



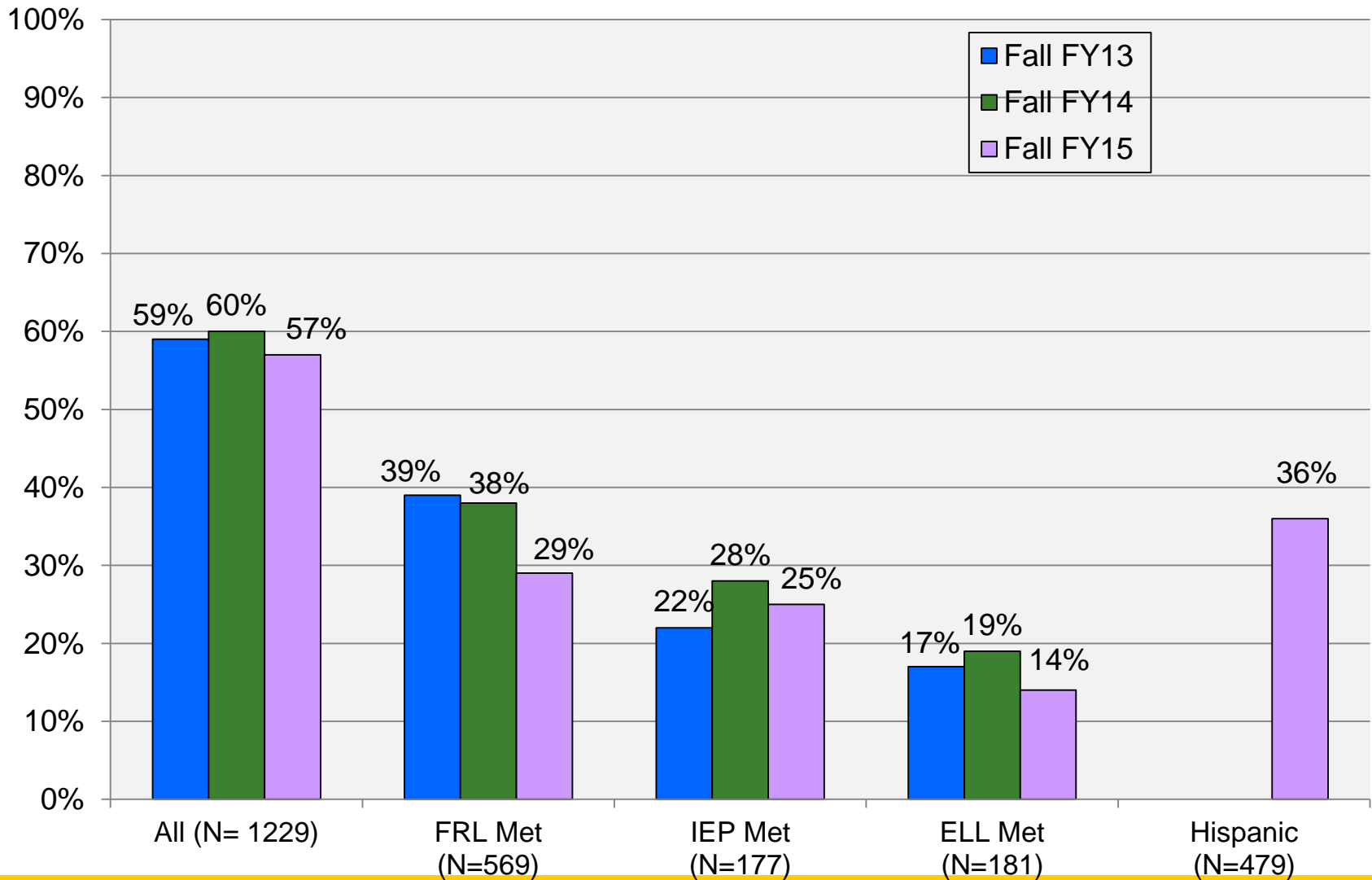
**Goal:** All students will demonstrate continuous growth and achieve college and career readiness standards – Math Achievement

*5<sup>th</sup>-8<sup>th</sup> Grade Students*

*AT or ABOVE national averages on MAP Math Assessment*



# District 105 Reading Achievement Fall FY15



## District 105 **Math** Achievement Fall FY15

